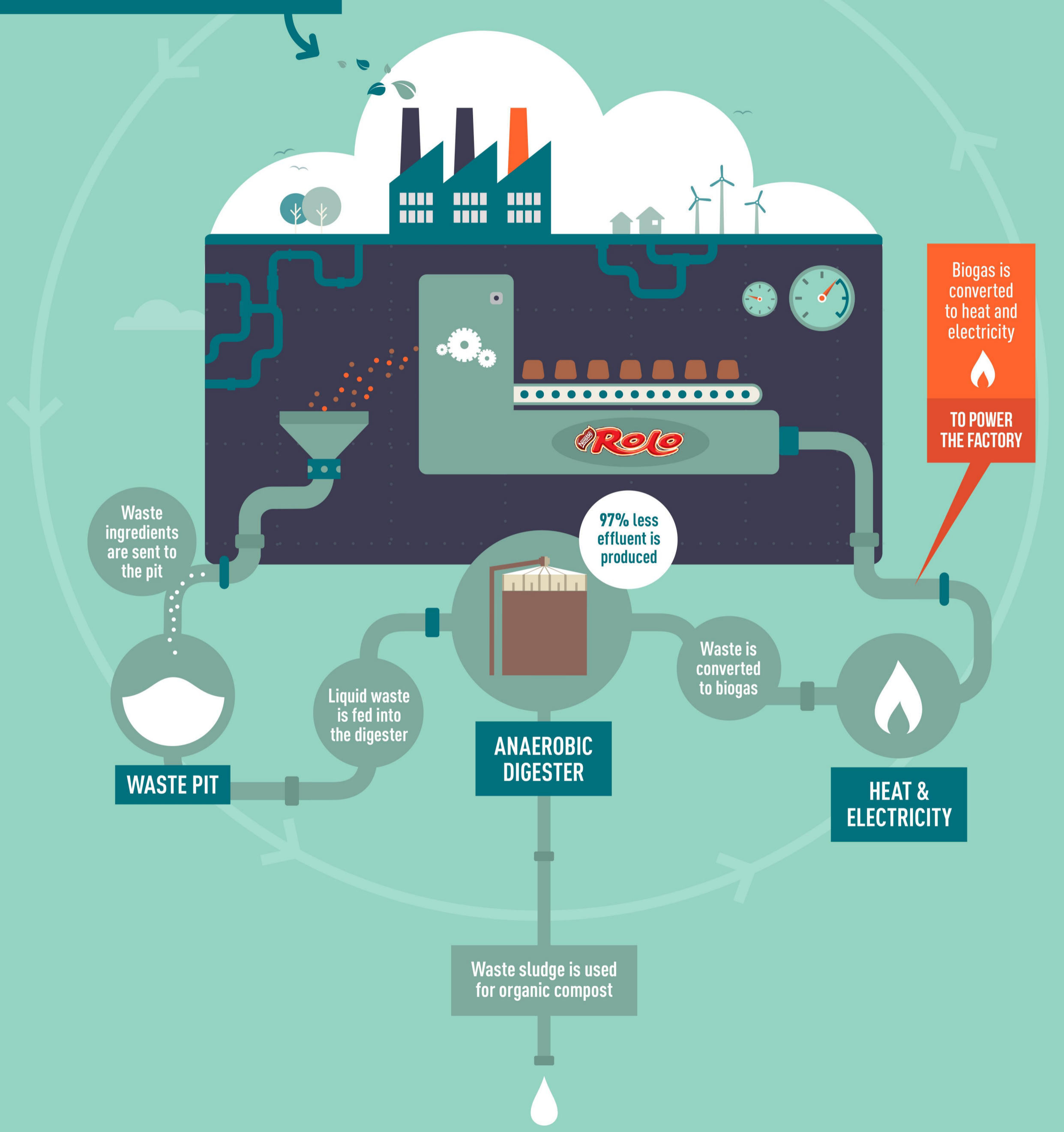


The waste from producing Nestlé favourites is used to

POWER PART OF THE FACTORY



Biogas is converted to heat and electricity



TO POWER THE FACTORY

Waste ingredients are sent to the pit

WASTE PIT

Liquid waste is fed into the digester

ANAEROBIC DIGESTER

97% less effluent is produced

Waste is converted to biogas

HEAT & ELECTRICITY

Waste sludge is used for organic compost